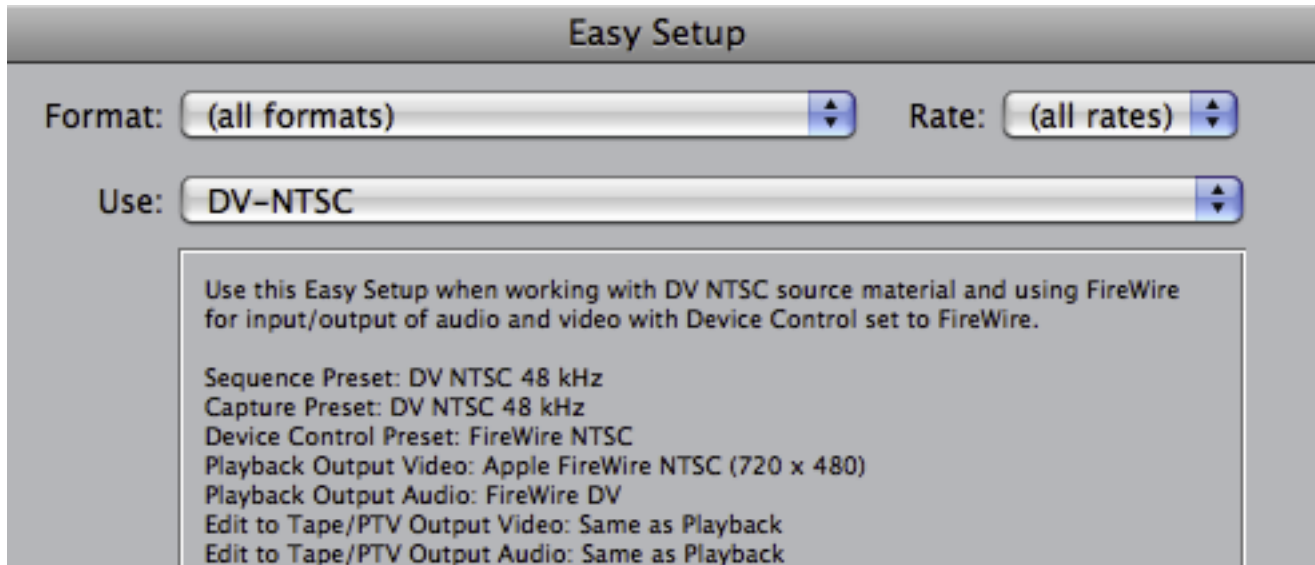


# DV vs. HDV setup in Final Cut Pro

For both DV and HDV setups, only sequences created after you change your settings will use the new settings.

## DV Setup

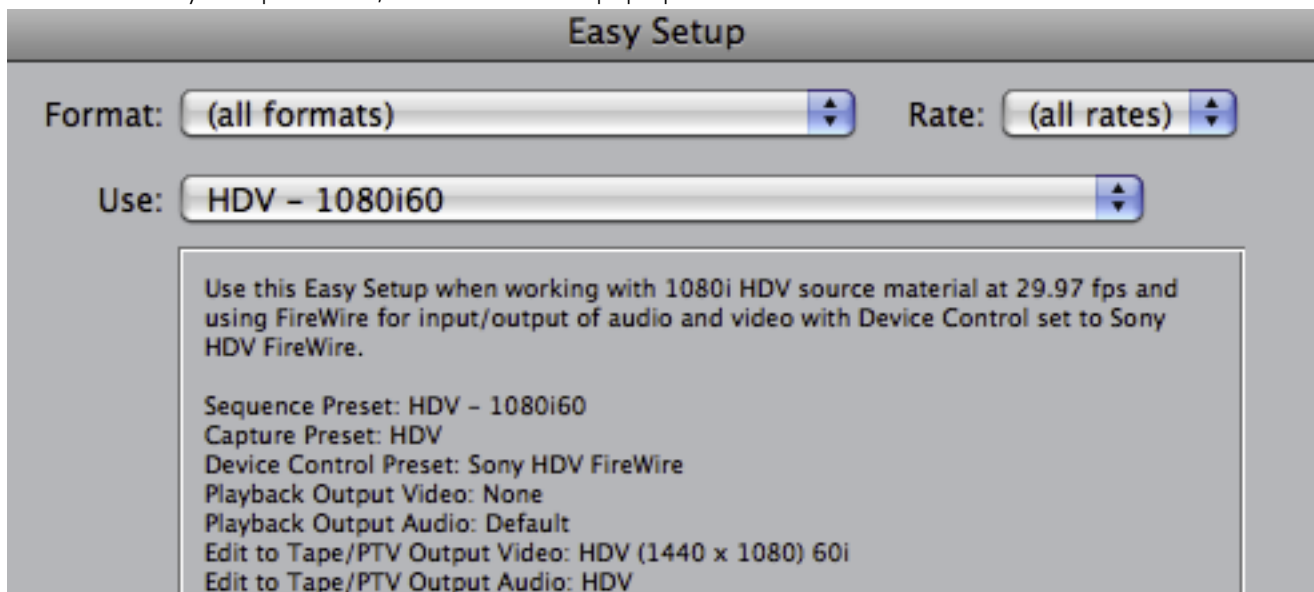
1. Turn on the DV Cam deck.
2. Start Final Cut Pro.
3. In Final Cut Pro, go to the Final Cut Pro menu and choose Easy Setup.
4. In the Easy Setup window, click on the Use: pop-up menu and choose DV-NTSC.



5. Click the Setup button.
6. Save your project and restart Final Cut Pro.

## HDV Setup

1. Turn off the DV Cam deck, if it is on.
2. Connect your HDV camera to the computer with a Firewire 4-pin to 6-pin cable.
3. Turn the camera on in the VCR/Play mode.
4. Start Final Cut Pro.
5. In Final Cut Pro, go to the Final Cut Pro menu and choose Easy Setup.
6. In the Easy Setup window, click on the Use: pop-up menu and choose HDV-1080i60.



7. Click the Setup button.
8. Save your project and restart Final Cut Pro.